

RA
NAL
DA



A CELEBRATION
OF SIMPLE LUXURY
LIVING



 **RC**
INTERNATIONAL

RC INTERNATIONAL

RC International for Trading & Construction,
a visionary in the world of real estate
development with an experience of over 20
years sets out a vision to expand with a new
development, “Ranalda”.



With a desire towards excellence, the company's
vision is to pursue growth through exceptional
customer service, spectacular designs, and a
keen dedication towards timely – delivery.





DESTINATION

Our aim, is to always create an integrated experience of *lifestyle and convenience* throughout a journey of what is supposed to be one of the *most vital decisions in one's life*.

This is why our cautious expansion has made it possible for us to locate one of the most sought after locations, **Pareklissia.**

Famous for its charm and serenity with just five minutes away from the Mediterranean Sea, Pareklissia is surrounded by so much greenery, beautiful restaurants, and most importantly very easy and safe roads.

DESTINATION PERKS



10 minutes to the new Casino due for opening in 2022.



5 minutes to the Mediterranean Sea.



5 minutes to the tourist area full of superbly luxurious resorts and restaurants.



10 minutes to the heart of the city of Limassol.

A feel of complete serenity with a nice breezy weather.

- 15 minutes from the city center
- 15 minutes from the old port
- 15 minutes from the new marina

- 5 minutes from the tourist area
- 5 minutes from 6/5 star resorts (*parklane, etc...*)
- 5 minutes from the Mediterranean
- 5 minutes from the main highway



A CELEBRATION OF SIMPLE LIVING

TION LUXURY

RCI • RANALDA | 9



RANALDA

A CELEBRATION
OF SIMPLE LUXURY
LIVING

THE DESIGN

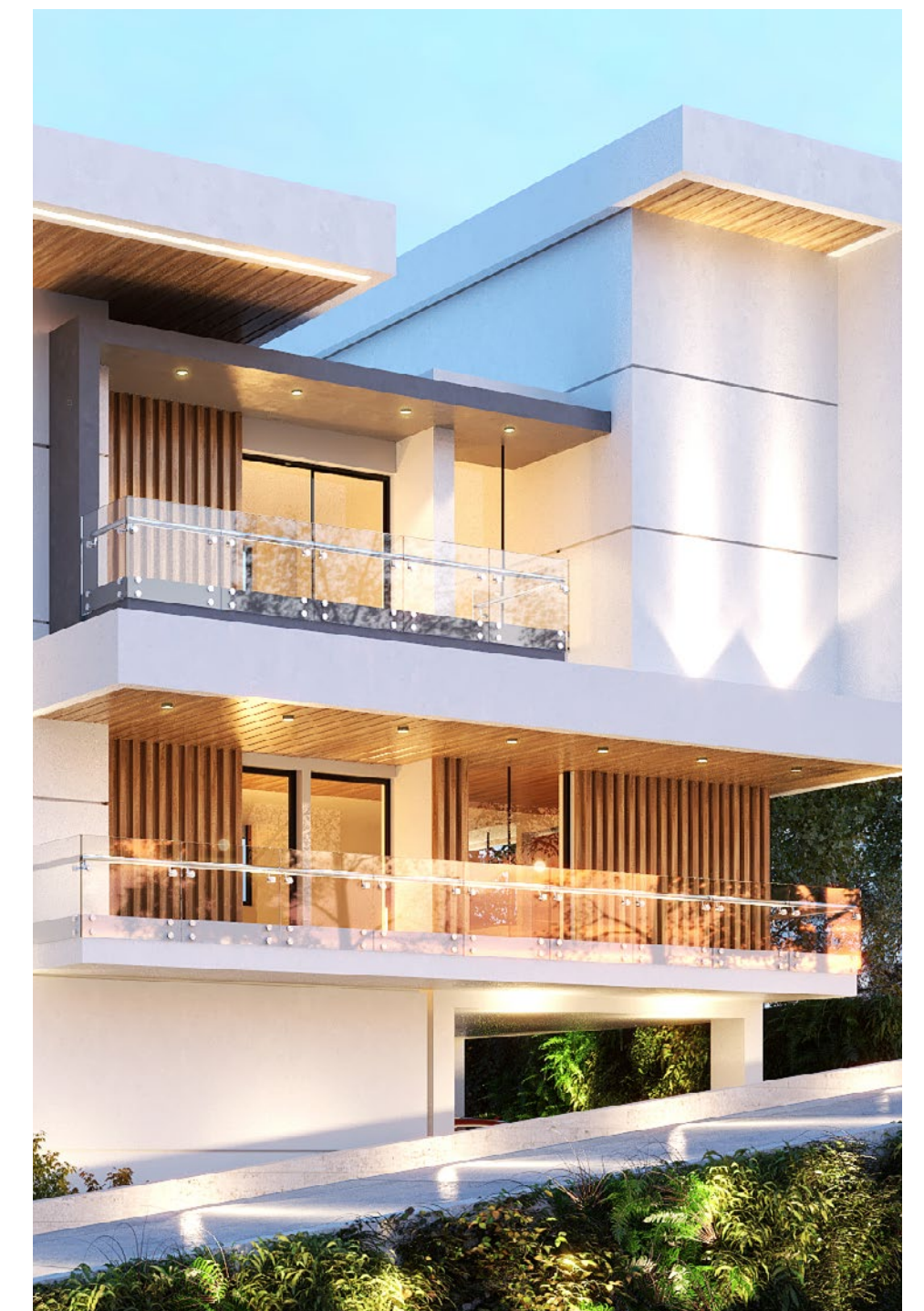


Carefully devised with the utmost originality, the new gated residence is beautifully composed of:

- . 3 Striking Villas
- . An Enchanting Building

All designed to resonate a theme of elegance, comfort and aspiration through one development, “Ranalda”.

“Ranalda”, is cautiously composed to make sure that *harmony, spaciousness, impeccable quality, and exceptional design* are not just factors of design, but also factors of peace-creation in the making.

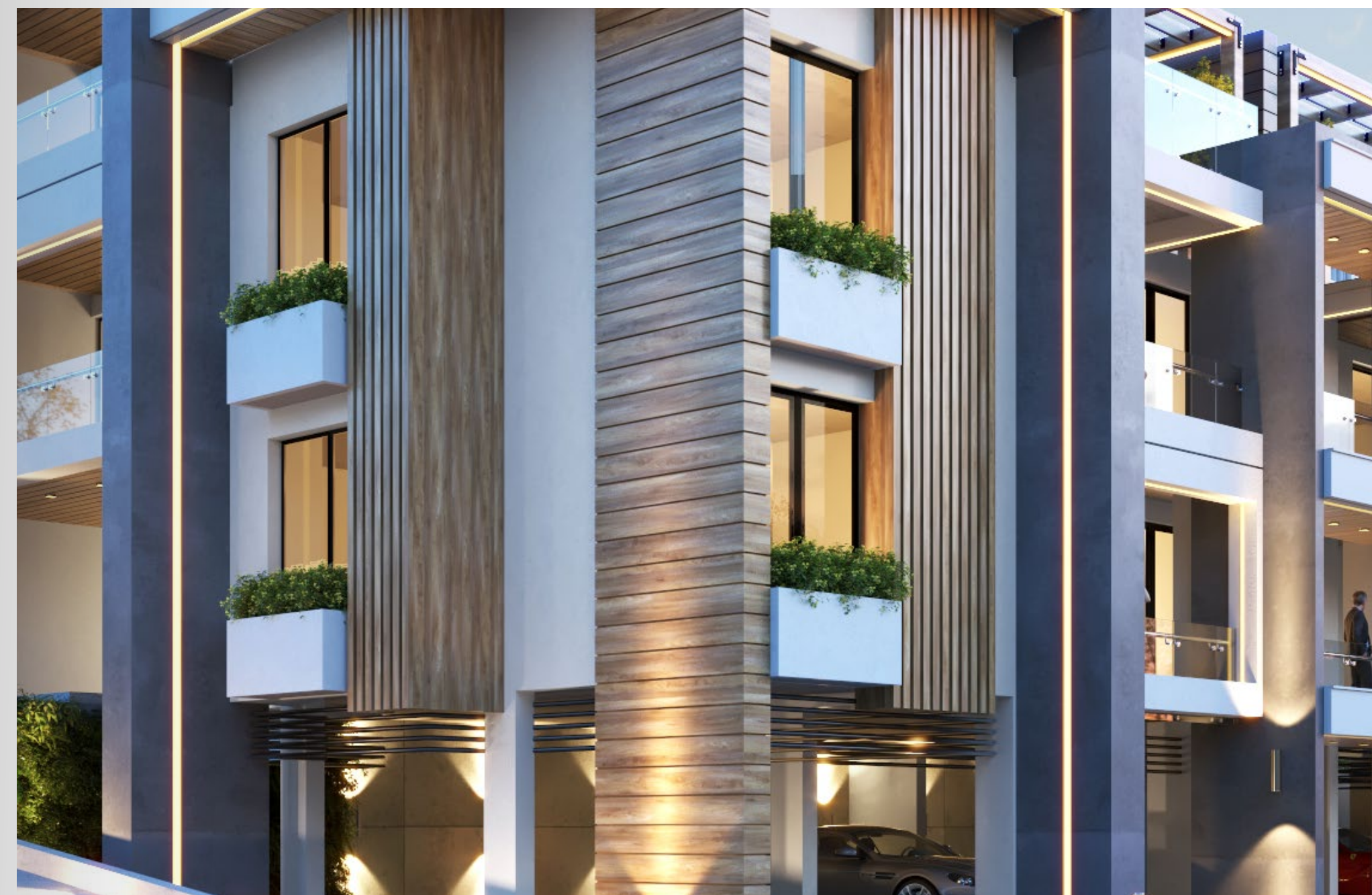
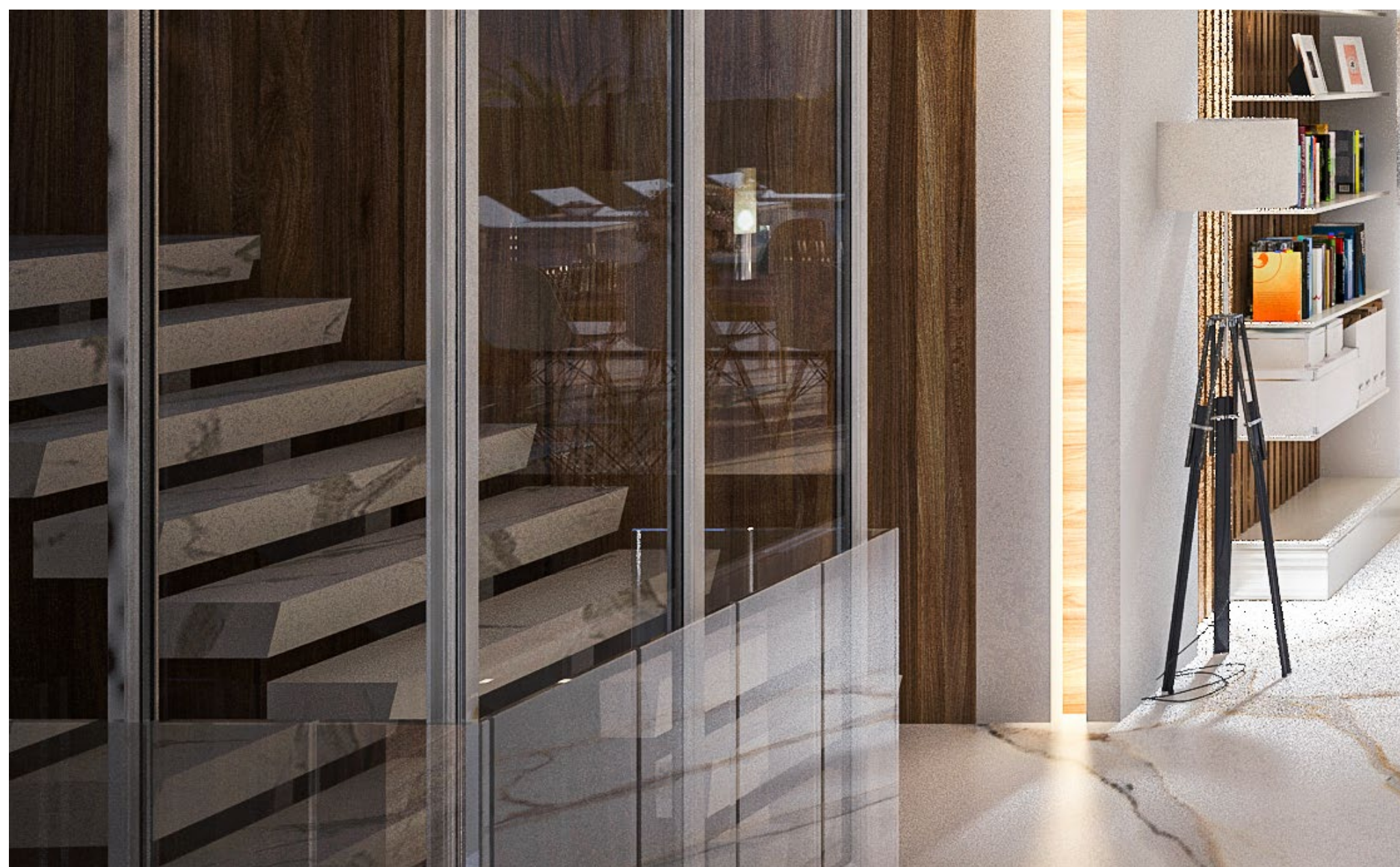




Units & villas are spaciouly and uniquely designed with the utmost care to provide a feel of ease and luxury to our residents.

SPACIOUS FEEL

SUSTAIN- ABILITY



With a keen consideration towards valued sustainability, Ranalda maintains an energy efficient relation with *the ecosystem through harvesting local energy sources.*

PROJECT COMPONENTS

1 THE BUILDING

A building of **10 apartments** lavishly designed with the utmost care offering a sense of complimentary feel to the gated residence.

THE BUILDING



TEN APARTMENTS

- 4 Two Bedroom Apartments
- Two Penthouses (2 Bedrooms)
- 3 One Bedroom Apartments
- 1 Penthouse (1 Bedroom)

LUXURIOUS ENTRANCE

- ◆ Each apartment has its own storage room
- ◆ Dedicated parking for each apartment

2^A STANDALONE VILLA

A standalone villa, with an area of over **150m²**, is a just a breakthrough with its carefully considered facades.

It is a combination of exceptional elements all coming together to form a feel of harmony and minimalism.

THE STANDALONE VILLA



COMPONENTS

- ◆ Master Bedroom with en-suite
- ◆ 3 Bedrooms
- ◆ Open Plan Kitchen
- ◆ Covered Verandas
- ◆ Roof Garden
- ◆ Storage Room
- ◆ Private Garden
- ◆ Dedicated Parking (2)
- ◆ Covered Parking

3 TWO SEMI-DETACHED VILLAS

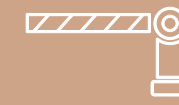
Two semi-detached villas resembling beauty and art at the same time. These two villas, with an area of over **145m²** are what completes the gated residence to make it one of the most distinguished projects in the area.

TWO SEMI-DETACHED VILLAS



COMPONENTS

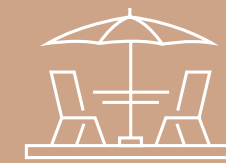
- ◆ Master Bedroom with en-suite
- ◆ 3 Bedrooms
- ◆ Open Plan Kitchen
- ◆ Covered Verandas
- ◆ Roof Garden
- ◆ Storage Room
- ◆ Private Garden
- ◆ Dedicated Parking (2)
- ◆ Covered Parking



GATED RESIDENCE



GREENERY



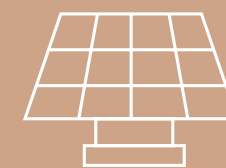
TERRACES



STORAGE AREAS



CCTV



PHOTOVOLTAICS



ROOF GARDENS



CYPRUS

67 Agias Fylaxeos, Drakos Court
2nd Floor, Office
3025 Limassol - Cyprus
M 0035799049444

LEBANON

Abraj Al Madina, Mazraa
Beirut - Lebanon
M 009613368082